

6 VAPOR & AIR BARRIER

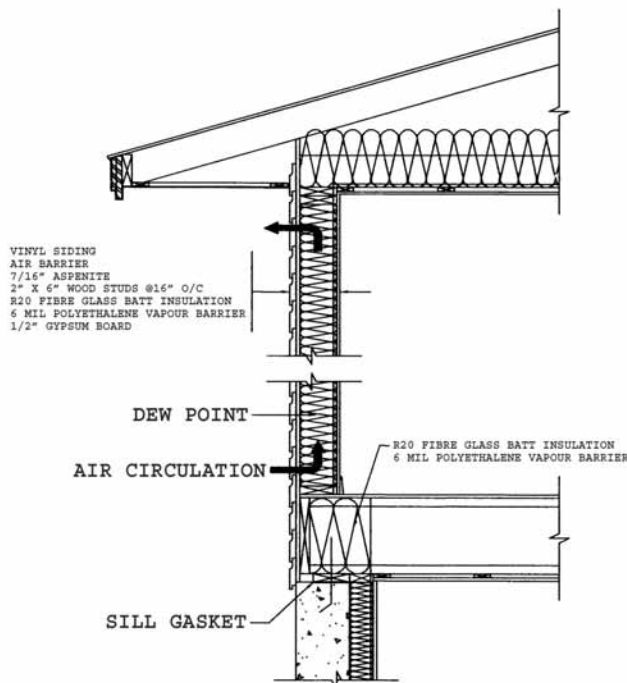
The NUDURA® Wall is a monolithic concrete wall with EPS (expanded polystyrene) connected to the concrete wall on both faces. The interior sides of the EPS panel is ribbed providing positive connection between the EPS and concrete.

Type II EPS is the only insulation on both faces of the wall assembly. The interior surface temperature of the EPS is relatively close to the interior ambient temperature.

Since NUDURA® has insulation on both faces of the wall, the dew point will not penetrate through the wall assembly, so vapor barrier is not required. The solid mass of concrete between the two EPS panels will not allow air to pass through, thus acting the same as an air barrier.

Should you encounter compliance issues with your local building authority pertaining to either air or vapor barrier requirements, contact your local distributor, who can provide additional documentation as required from NUDURA to meet the specific requirements for your region.

CONVENTIONAL WALL SECTION



NUDURA® WALL SECTION

